

The air filter, petcock, gas cap tub

50 years of different filters and petcocks.

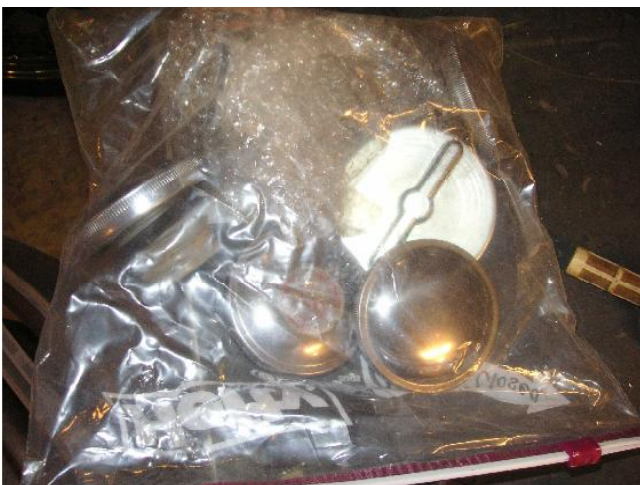
After taking two tubs and making one tub strictly for carburetors, this tub will be for the Sportster air filters, petcocks, and gas caps.



I didn't even remember buying this, it is for my 1952 K-Model restoration. You can see how this air filter cover notches into rivets on the backing plate I am holding behind it. This goes on the K-Model restoration table.



I started this tub with two round filters, a backing plate, and a bracket for 1979 and later where there are threaded bosses on the heads.



I tossed a bunch of gas caps into a bag.



Petcocks, both early and late model.



Another bag of petcocks.



Here is the baggies in the tub, along with four supposedly new-old-stock gas caps for the old 1950s and 1960 large gas tanks.



Three air filter support brackets and some choke cables and mounts.



These is either for an FX gas tank or maybe it is for the XLCR tank I am going to mount on the 1980 show bike.



Some carb inlet venturis, and the brackets used on 1979 and later to hold the air filter in place.



All these cables are going in the throttle tub.

as



I bought a bunch or repop petcocks trying to get the fiberglass tank on the 1980 show bike to work.



All this stuff just fits in the tub, and these pics will remind me what is where. After taking two tubs and making one tub strictly for carburetors, this tub will be for the Sportster air filters, petcocks, and gas caps.