

Mainshaft 3rd gear

This gear has been the same since 1956.

The mainshaft 3rd gear has not changed much since 1956. The factory did change the number of teeth on the earliest gear, from 21 to 20 in K-models and Iron Sportsters from 1954 to 1984.



The Iron Sportster mainshaft is a triumph of engineering. The general design has sustained from 1952 to 1984. There were teething problems in the early K-model, but they were all cured by 1957 with the introduction of the Sportster.



Mainshaft second gear is in the darker oval. Gears are named for carrying power, not the order on the shaft. The gears from left to right are mainshaft low, mainshaft 3rd, mainshaft 2nd, and the clutch gear.

35304-52

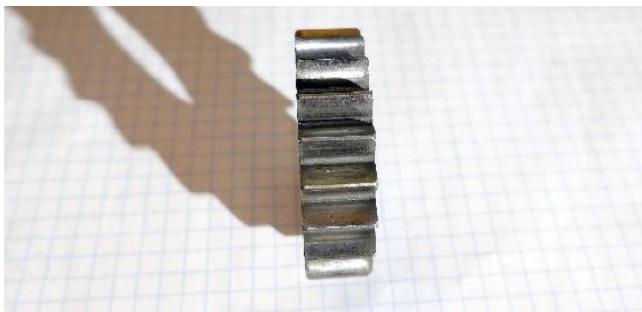
21 teeth, 1952, 1953

35304-54

20 teeth, 1954, 1955

35305-56

20 teeth, 1956 to 1978



Sportster 35305-56 Mainshaft-3rd-gear,
1956-1978

35305-56A

20 teeth, 1979 to 1984

The part changed to a 35305-56A in 1979, which should retrofit with this gear. Letter suffixes usually mean the part is very similar and will replace the part with no letter suffix.